



THE JON SMITH GROUP

# MODULAR WALL SYSTEMS TEMPORARY & PERMANENT WALLS



*QUICK AND EASY, DURABLE SOLUTIONS FOR ENDLESS APPLICATIONS*



[www.mccainwalls.com](http://www.mccainwalls.com)



the best thing to happen  
to walls since 200 BC

## **CONTENTS**

MCCAIN WALLS™	6
OUR WALLS VS. OTHERS	8
CASE STUDY	10
MULTI-PHASE PROJECTS	11
GENERAL SPECIFICATIONS	12
TECHNICAL SPECIFICATIONS	13
STANDARD & OPTIONAL PARTS LIST	14



**WE WORK ON THE PRINCIPLE THAT QUALITY PRODUCTS, RELIABLE SERVICE, HONESTY, AND INTEGRITY ARE THE KEYS TO SUCCESS.**



# WHO WE ARE AND WHAT WE DO



## SwiftWall Solutions

SwiftWall Solutions was founded in Mid-Michigan and began with the idea to provide greener, more earth friendly solutions to temporary walls and construction barriers. As we have grown and expanded, we have found these can be used for many applications. Our goal is to provide people in the construction industry with tools that make their lives safer, and more productive.

As leaders in the manufacturing industry, we are setting trends by delivering green product solutions to the construction industry. Our smart operations and sustainable practices allow us to work alongside customers and give them the level of service we are committed to.

We pride ourselves in:

- Innovative design and engineering
- Superior quality, American-made solutions
- Competitive pricing

We rise above the competition by putting our customers' needs first.

## WHY CHOOSE US



### SUSTAINABLE & REUSABLE

Our products are made from 100% recyclable metals, and are reusable, saving tons of debris from landfills.



### MADE IN AMERICA PRODUCTS

Manufactured and assembled in the United States, we stand strongly behind our high-quality, innovative products.



### TOP-NOTCH CUSTOMER SERVICE

Our dedicated in-house support team thrives on providing timely solutions that help customers stay on track.

# MCCAIN WALLS™

## TEMPORARY & PERMANENT MODULAR SYSTEMS

### Modern and efficient solutions for temporary and permanent walls.

Manufactured from 100% recyclable metal, *McCain Walls* are designed to be reused and reconfigured effortlessly — accommodating most job site specifications.

Moveable kits enhance the modularity feature, making it simple to relocate *McCain Walls* systems on existing and new construction projects.

Sleek panels are available in various heights and widths perfect for indoor, outdoor, short-term, long-term, and multi-phase projects.

Easy setup and takedown require minimal tools and help accelerate project schedules.

*McCain Walls* are available in any width x 8' height standard; extender panels can be used for heights up to 16'. For greater heights, modular walls can be stacked.

## FEATURES & BENEFITS

### EASY SETUP

Install and remove *McCain Walls* faster than traditional walls.

### REUSABLE & RECONFIGURABLE

Reuse as many times on new and existing construction projects as needed. Existing *McCain Walls* are reconfigurable by adding doors, windows, and angled corners.

### CLEAN

Prevent growths of mold and mildew with a glossy white finish.

### DUST-FREE

*McCain Walls* do not require taping, sanding, or painting, creating a dust-free environment during the installation process.

### MODERN

Impress customers with a smooth, glossy look. Provide a graphics-ready surface for advertising revenue opportunities.

### SUSTAINABLE

*McCain Walls* are 100% recyclable metal, therefore never having to land in the trash.

### ENVIRONMENTALLY-FRIENDLY

Earn LEED certification points by reusing walls and panels, recycling and reducing greenhouse gas emissions. *McCain Walls* are recyclable.

**TORREYANA IN ALEXANDRIA**  
NEW CONSTRUCTION  
Two *McCain Walls* systems were installed to create a walkway from the elevator to the theater.



### RESORT & CASINO RENOVATION

**01** Installed 200' of Walls with varying ceiling heights in three nights.

### UC SAN DIEGO HEALTHCARE PHYSICIANS LOUNGE UPGRADE

**02** The installation was so quick and dust-free that physicians remained on their computers during the process.

### LOS ANGELES INTL AIRPORT TERMINAL 2 RENOVATIONS

**03** It took one evening to install two freestanding *McCain Walls* during normal operating hours.



### MARRIOTT LAX MAIN LOBBY RENOVATION

**04** In three hours 50' of *McCain Walls* were built by two crew members during business hours.

### SAN DIEGO INTL AIRPORT SECURITY AREA UPGRADES

**05** It took 2 1/2 nights and six crew members to install 450' of *McCain Walls* with varying heights of 9'- 14'.

# OUR WALLS VS. OTHERS

## FOR TEMPORARY SHORT & LONG-TERM APPLICATIONS

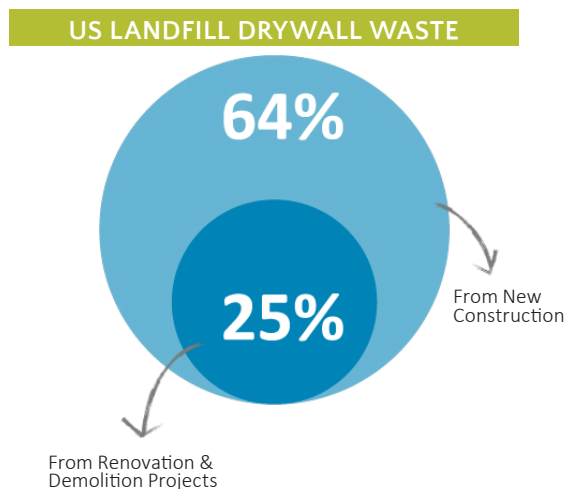
Temporary walls, traditionally made with drywall and plywood are a staple of the construction industry. The lengthy process typically includes building wall frames, hoisting heavy drywall or plywood panels into place, adding compound, sanding, and painting. When there is no longer a need for the temporary dry walls, they are removed and discarded at the nearest landfill.

### MCCAIN WALLS VS. DRYWALL TEMPORARY WALLS

FEATURES	MCCAIN WALLS	OTHER WALLS
Reusable Components	✓	-
Reconfigurable Walls	✓	-
100% Recyclable Metal	✓	-
Simple, Quick Installation Process	✓	-
Minimal Tools Required	✓	-
Moveable Walls	✓	-
Environmental-Friendly	✓	-
Dust-Free Installation	✓	-
Qualify for Potential LEED Points	✓	-
Bacteria, Mold, and Mildew-Resistant Surface	✓	-
Requires Taping	-	✓
Requires Sanding	-	✓
Requires Painting	-	✓

While this may do the job, the traditional non-recyclable, one-time use process takes longer and has detrimental effects on the environment.

According to the US EPA (The United States Environmental Protection Agency), 25% of the nation’s drywall landfill waste is from renovation and demolition construction; 64% is from new construction.



Drywall waste presents a degree of environmental contamination when it decomposes in landfills.

First, it releases hydrogen sulfide into the air, then bacteria converts plasterboard paper into methane, a potent greenhouse gas.

The time has come to transform the old-time mentality of “build, remove, and trash” into “reuse, reconfigure, and recycle.”



## RECONFIGURABLE SOLUTIONS

The flexible design and reusability of *McCain Walls* make them the ideal option for both temporary and permanent walls. Modular systems can be reconfigured to create many solutions for a variety of industries.

For permanent wall applications, interior finish panels are added, creating a sleek look and feel on the inside as well, making it an ideal solution for module office space.

### IDEAL APPLICATIONS FOR

- Learning Center Partitions
- Mall Barricades
- Manufacturing Clean Rooms
- Office Enclosures
- Semi & Full-Height Partitions
- Temporary Construction Walls
- Tenant Improvements
- Warehouse Dividers



AIRPORTS



CASINOS



CONVENTION CENTERS



HOSPITALS



HOTELS



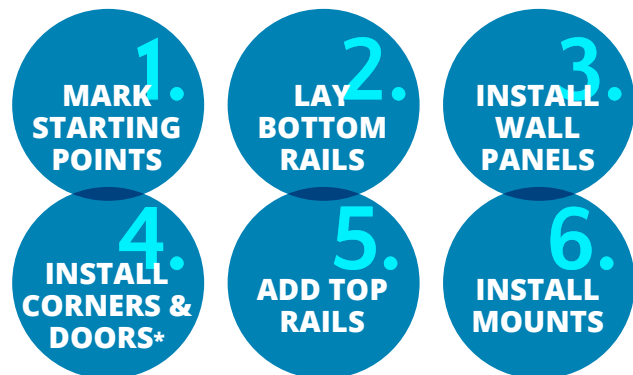
LIFESTYLE CENTERS

## SIMPLE INSTALLATION PROCESS

Unlike traditional temporary walls that take days to build, *McCain Walls* are easy to install, require minimal tools, and reduce labor costs.

In six simple steps, *McCain Walls* are up, and since all of our walls leave our facility with a smooth finish, it eliminates the need for taping, sanding, and painting. The dust-free assembly can easily be done without interrupting business operations.

Complete installation instructions and video are available online and in print to facilitate the process.



### BASIC INSTALLATION STEPS

*\*Only if applicable. For step-by-step detailed installation instructions, visit [www.mccainwalls.com](http://www.mccainwalls.com).*



# CASE STUDY

*McCain Walls* have given contractors like Buffalo Builders opportunities to save time and money for their businesses and customers.

Buffalo Builders has used *McCain Walls* multiple times on several Las Vegas casino renovation projects.

*The McCain Walls system was delivered on time, reduced our overall construction schedule, and installation was easy, quick, and clean. Our owners and customers were very impressed, and we have reused McCain walls several times already, making it very cost effective as well.*

*-Tom Sturgis, Supervisor*

## PROJECT DETAILS

For this case, *McCain Walls* were used as a long-term solution for a temporary Subway restaurant while construction of a new Subway restaurant at the Monte Carlo Resort and Casino goes underway.

An interim Subway locale was created using 908 sq. ft. of modular walls of 10' and 12' tall panels, including a single-door kit and single-door frame.

To meet the restaurant's requirements, Buffalo Builders modified *McCain Walls* by engineering a substrate to incorporate HVAC, electrical, and plumbing. They also applied tile, vinyl, and signage to the surfaces.

Reconfigured wall panels served as ceiling panels that supported lighting and HVAC.

## END RESULTS

A flexible and versatile modular design proved that *McCain Walls* could be reused and customized to meet the needs of this unique project.

Buffalo Builders found a solution, making necessary changes during a temporary restaurant build.

While the new Subway restaurant is under construction, the temporary Subway locale will continue to generate revenue.

**CUSTOMER:** Buffalo Builders, Inc.

**PROJECT:** Subway Restaurant at the Monte Carlo Resort and Casino

**LOCATION:** Las Vegas, NV

### PROJECT SPECS

- 908 sq. ft. of 10' and 12' walls
- Single-door kit
- Additional single-door frame

### McCain WALLS SOLUTIONS

- Temporary structure for Subway restaurant
- Adapted walls into a ceiling for lighting and HVAC needs
- Sturdy, smooth surface for Subway signage
- Single-door access to the casino gaming area

# MULTI-PHASE PROJECTS

*McCain Walls* have quickly become the go-to product for large, multiphase, high-trafficked projects. From tenant improvements to airports, *McCain Walls* installation process is quick, easy, and reduces the size of required labor.

## INTERIOR OFFICE REMODEL | BURBANK, CA | 1,170 SQ FT

The installation of two *McCain Walls* of different sizes and door counts were installed in a two-phase interior office remodel. The first phase was completed in a day; the second phase was smaller and was finalized in four hours by two journeymen.

### # OF INSTALLERS



### McCAIN WALLS SPECS

Phase 1: 890 sq ft  
10'H x 89'L  
+ 1 Single Door

### INSTALLATION TIME

8 Hours



Phase 2: 280 sq ft  
10'H x 28'L  
+ 2 Double Doors

4 Hours

## SAN DIEGO INTERNATIONAL AIRPORT | 4,829 SQ FT

4,829 sq. ft. of *McCain Walls* in varying heights were installed over three nights by six installers as part of a multiphase renovation project.

**Double-stacked walls were used for a 175' section of the terminal.**

### # OF INSTALLERS



### McCAIN WALLS SPECS

11'H x 51'L  
+ 9'H x 202'L  
+14'H x 175'L Stacked

### INSTALLATION TIME

2.5 days

## LOS ANGELES INTERNATIONAL AIRPORT | 3,960 SQ FT

Phase 1 totaling almost 4,000 sq. ft. of *McCain Walls* as part of a multiphase renovation project in Terminal Two, was completed in four hours by six installers.

### # OF INSTALLERS



### McCAIN WALLS SPECS

8'H x 120'L  
+ 10'H x 300'L

### INSTALLATION TIME

4 Hours

# GENERAL SPECIFICATIONS

## OVERVIEW

*McCain Walls* modular systems consist of interlocking metal panels and rails, designed to create temporary and permanent architectural structures and enclosures. All components are manufactured from recyclable metal.

Wall panels are available in various heights and widths. Starter panels are angle-adjustable and interchangeable, allowing systems to start from the left or right. The length of a *McCain Walls* system is infinite.

Rails provide stability to a *McCain Walls* system and are added to the top and bottom of wall panels with screws.

Various top and floor mounting options are available. Rails can be attached to any floor finish using a gripping material, low-tack adhesive tape, and floor mounts. Top rails are secured to existing ceilings or wall structures with steel studs and other mounting components.

Standard corner kits provide 90-degree corners. Variable angle panels are also available for custom angle degrees.

If wall panels need to be removed from — or a door kit needs to be added to — an existing system, they can be done so individually without breaking down the entire system.

Customized wall systems are an option with additional components like door kits, windows, and varying corner degrees. Various configuration options are available for free-standing structures, walls, partitions, and enclosures.

*McCain Walls* are mold- and mildew-resistant (optional antimicrobial and anti-graffiti coatings are available).

***McCain Walls are a reusable, reconfigurable, and recyclable. Made in the USA.***

## OPTIONAL COMPONENTS

### DOOR KITS

Single and double door configurations with commercial-lever locksets are available in outward and inward swinging options. Self-closing units that provide a smooth, automated closing motion are available as well.

### ADJUSTABLE HORIZONTAL SLIDING PANELS

The adjustable horizontal sliding panel decreases the gap tolerance between the last wall panel and the end starter panel. With a 7" travel span, the adjustable horizontal sliding panel can expand up to 30" in length.

### EXTENDER PANELS

Extender panels are designed to extend the length of a standard height wall panel. Nested inside the standard panel, the extender panel provides an additional height range of 20" to 45".

### VARIABLE ANGLE PANELS

Variable angle panels clamp mechanism offers 90 - 180 and 180 - 270 degree corners for curved walls.

### INTERIOR PANELS

Interior panels are ideal for permanent walls. A glossy white finish provides a clean, sleek, modern look and feel.

### INSULATION

Wall panels are designed to hold 1" and 2" insulation, ideal for controlled environments.

### MOVEABLE WALL KIT

Movable wall kit mechanism is designed to move walls in sections without having to disassemble them. The kit is ideal for multi-phase projects in the same location.

# TECHNICAL SPECIFICATIONS



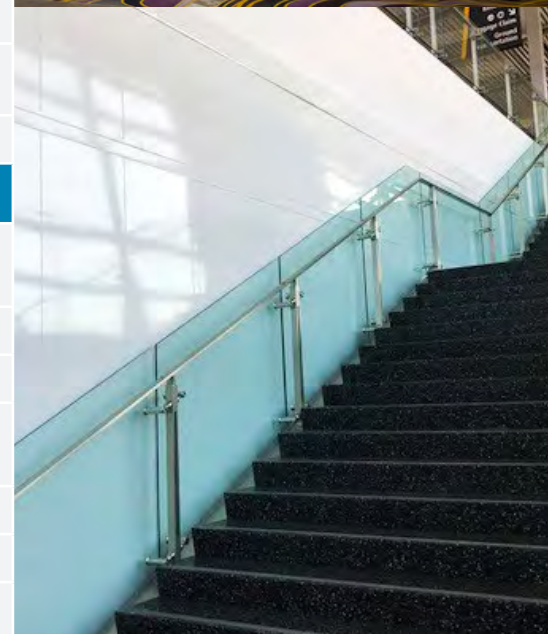
## STANDARD COMPONENTS

Starter Panels	8'H x 3"W
Wall Panels	Standard heights: 8' and 10' Width: 6", 12", and 24" <i>For taller heights, use extender panels</i>
Rails	8'L
Corner Kits	90-degree corner panel: 8'H x 6"W Rails: 4'L <i>For non-90-degree corners, use varying corner panels</i>
Ceiling Support	Brackets, metal studs, and standard anchoring devices
Fasteners	Bracing plates, corner brackets, panel brackets, splice brackets
Mounts	Anchor and sandbag mounts; gripping material, double-sided adhesive foam
Finishes	Glossy white



## OPTIONAL COMPONENTS

Single Door Kits	Right-Hand Inswing / Outswing Left-Hand Inswing / Outswing
Double Door Kits	Inswing / Outswing
Self-Closing Unit	Available for single- and double-door kits
Adjustable Sliding Panels	7" horizontal travel span, expanding panel up to 30"L
Extender Panels	Extend standard-height wall panels up to 13.5'
Variable Angle Panels	Varying corners: 90 - 180 and 180 - 270 degrees
Top Trim Caps	8"H x 96"L 18"H x 96"L 30"H x 96"L
Interior Finish Panels	Provide finished interior look for permanent use
Window Frames	32"H x 36"W
Coatings	Anti-graffiti Antimicrobial
Insulation	Supports 1" and 2" insulation
Moveable Wall Kit	Weight capacity: 1,000 lb



# STANDARD & OPTIONAL PARTS LIST

## STANDARD COMPONENTS

	PART #	HEIGHT	WIDTH	WEIGHT
<b>PANELS, CORNERS, &amp; RAILS</b>				
Right Starter Panels	MW-SP-R-AL-120-W	120"	6"	17 lb
Left Starter Panels	MW-SP-L-AL-120-W	120"	6"	17 lb
Wall Panels	MW-P-AL-120-06-W	120"	6"	15 lb
	MW-P-AL-120-12-W	120"	12"	22 lb
	MW-P-AL-120-24-W	120"	24"	34 lb
Inside Corner Panel Kit	MW-IC-KIT-AL-120-W	120"	6"	39 lb
Outside Corner Panel Kit	MW-OC-KIT-AL-120-W	120"	6"	39 lb
Rails	MW-R-AL-W	6"	96"	10 lb

## FASTENERS & MOUNTS

Bracing Plate	MW-F-BP-AL-W	5"	5"	1 lb
Insulation Hat Bracket - 1"	MW-S-IHB-1-AL-W	2"	3"	.25 lb
Insulation Hat Bracket - 2"	MW-S-IHB-2-AL-W	2"	2"	.25 lb
Splice Bracket	MW-F-SB-AL-W	5"	5"	1 lb
Top Bottom Rail Support Bracket Kit	MW-F-TBR-SB-KIT-AL-W	12"	6"	3 lb
Anchor Mount	MW-F-AM-AL-W	6"	5"	1 lb
Floor Sand Mount	MW-F-FSM-AL-W	6"	14"	2 lb

## OPTIONAL COMPONENTS

	PART #	HEIGHT	WIDTH	WEIGHT
<b>DOOR KITS</b>				
Single Door Left-Hand In Swing	MW-SDLHI-AL-120-W	120"	72"	168 lb
Single Door Left-Hand Out Swing	MW-SDLHO-AL-120-W	120"	72"	163 lb
Single Door Right-Hand In Swing	MW-SDRHI-AL-120-W	120"	72"	168 lb
Single Door Right-Hand Out Swing	MW-SD-AL-120-W	120"	72"	163 lb
Double-Door In Swing	MW-DDI-AL-120-W	120"	120"	280 lb
Double-Door Out Swing	MW-DD-AL-120-W	120"	120"	273 lb
Self-Closing Unit - Double Door	MW-DDC-KIT-AL-W	-	-	12 lb
Self-Closing Unit - Single Door	MW-SDC-KIT-AL-W	-	-	6 lb

## INTERIOR FINISHES

Interior Finish Panel Ceiling Mount	MW-IFP-CM-AL-W	4"	96"	10 lb
Interior Finish Panel	MW-IFP-ICP-AL-120-W	120"	8"	12 lb
	MW-IFP-AL-120-06-W	120"	6"	6 lb
	MW-IFP-AL-120-12-W	120"	12"	10 lb
	MW-IFP-VP-AL-120-18-W	120"	18"	14 lb
	MW-IFP-VP-AL-120-24-W	120"	24"	18 lb
Interior Finish Panel Rail	MW-IFP-R-AL	4"	120"	5 lb
Interior Finish Panel Support Bracket	MW-IFP-ISB-AL	3"	6"	.25 lb
Interior Finish Panel Top Trim Cap	MW-IFP-TTC-AL-W	4"	120"	8 lb

## ADJUSTABLE PANELS

Adjustable Horizontal Sliding Panel	MW-AP-HSP-AL-120-W	120"	120"	52 lb
Extender Panel	MW-EP-AL-20-24-W	20"	24"	8 lb
	MW-EP-AL-28-24-W	28"	24"	11 lb
	MW-EP-AL-45-24-W	45"	24"	16 lb
Variable Angle Panel	MW-VAP-AL-120-W	120"	6"	33 lb

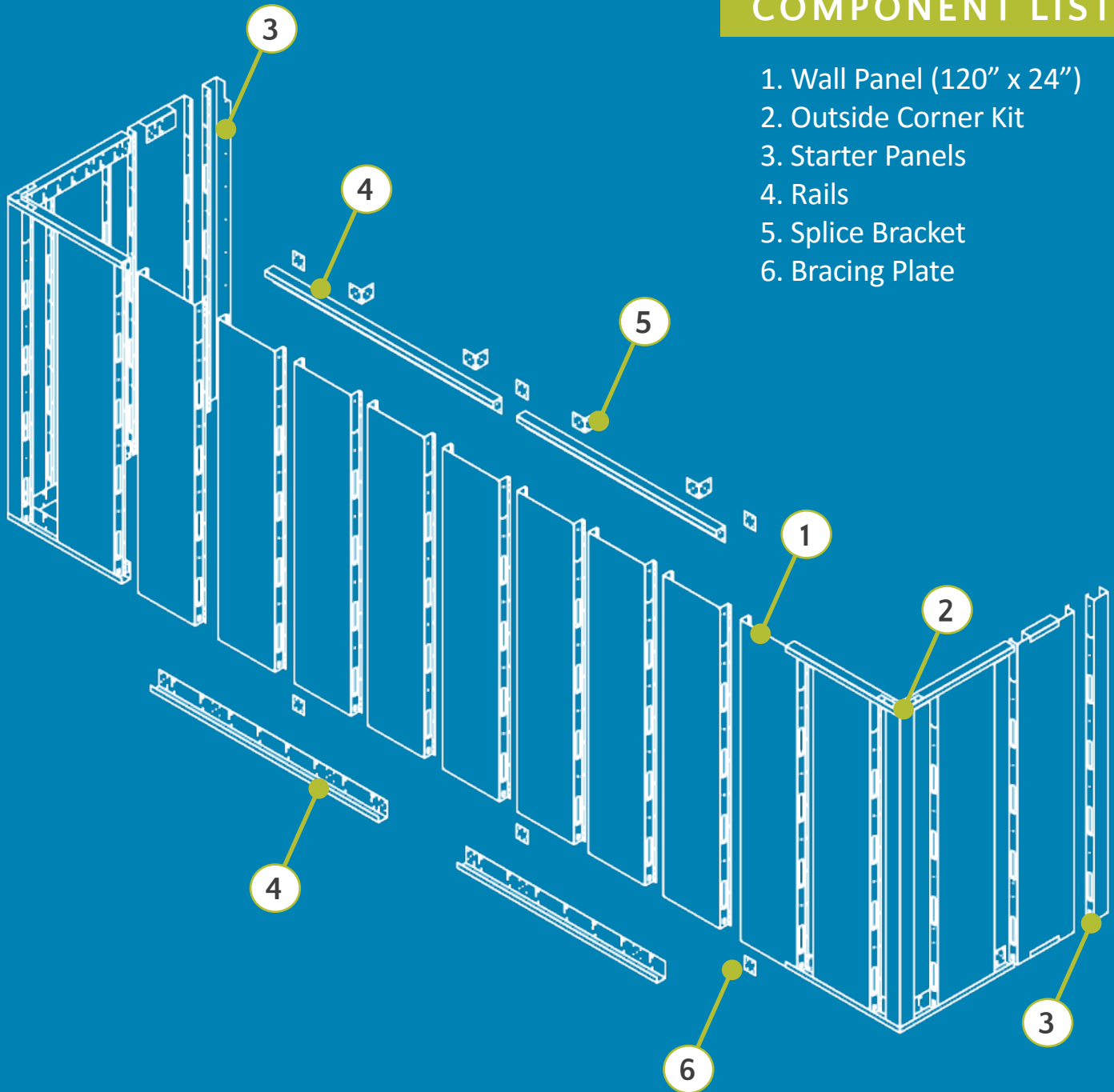
## OTHER

Top Trim Caps	MW-FT-TTC-AL-8-W	8"	96"	10 lb
	MW-FT-TTC-AL-18-W	18"	96"	30 lb
	MW-FT-TTC-AL-30-W	30"	96"	33 lb
Trim Strip	MW-FT-S-AL-W	3"	117"	4 lb
Ceiling Mount	MW-F-CM-AL-W	120"	4"	8 lb
Wheel Crank System	MW-WCS-P-12-KIT-W	20"	6"	48 lb
Window Frame	MW-WF-AL-32-36-W	32"	36"	32 lb

# STANDARD WALL SYSTEM DIAGRAM

## COMPONENT LIST

1. Wall Panel (120" x 24")
2. Outside Corner Kit
3. Starter Panels
4. Rails
5. Splice Bracket
6. Bracing Plate





# THE JON SMITH GROUP

Proudly Servicing Southeast United States!

Phone: 404-407-5333

email: [info@thejonsmithgroup.com](mailto:info@thejonsmithgroup.com)

website: [www.thejonsmithgroup.com](http://www.thejonsmithgroup.com)



**McCain WALLS**

1928 Stark Rd

Midland, MI 48642 Ph: 989.279.0191

Email: [info@mccainwalls.com](mailto:info@mccainwalls.com)

[www.mccainwalls.com](http://www.mccainwalls.com) | [www.swiftwall.com](http://www.swiftwall.com)



**SWIFTWALL**<sup>®</sup>  
SOLUTIONS

American-Made Product by SwiftWall Solutions.